

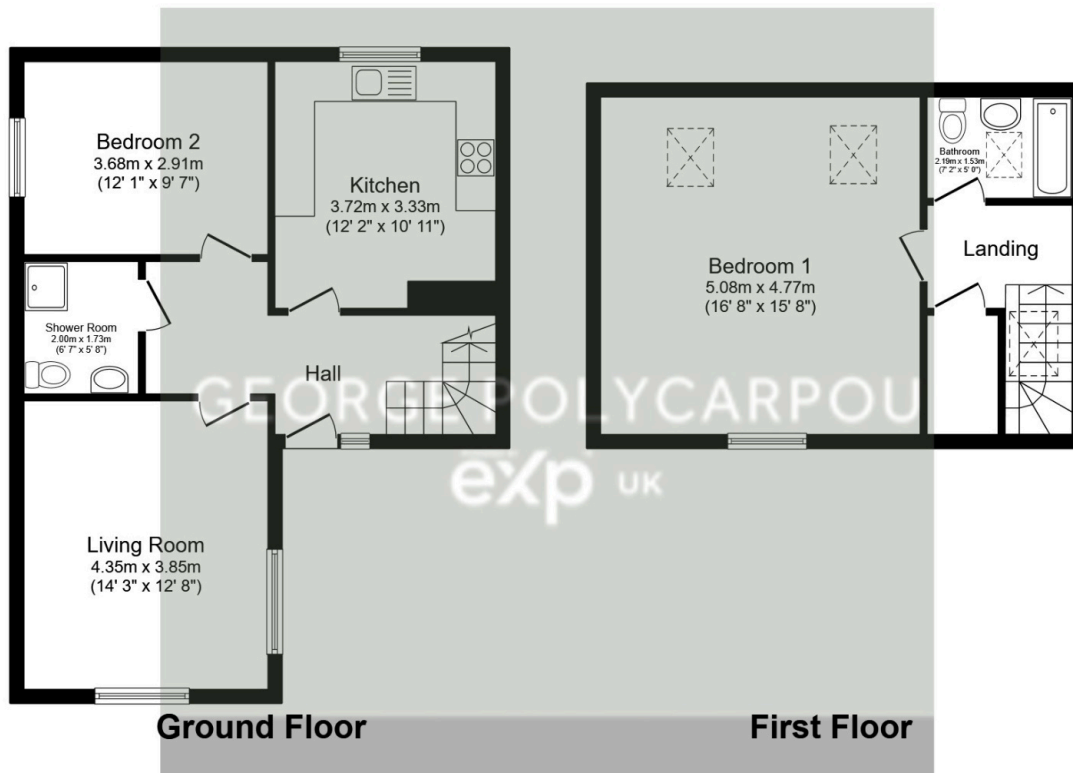
Mews Lodge, Grange Court, Grange Gardens, Pinner, HA5 5QB

£649,950

🛏️ 2 🚿 2 🛋️ 1



- Newbuild
- Mobalpa Kitchen
- Luxury Fitted Bathroom
- Allocated Parking
- Close To All Amenities
- Prime Pinner Location
- Miele Appliances
- Under Floor Heating
- 0.2 Miles From Pinner Station
- Marketed by George Polycarpou - REF/ GP0453



Total floor area 101 sq.m. (1,088 sq.ft.) approx

This plan is for illustration purposes only and may not be representative of the property. Plan not to scale. Powered by PropertyBox

'Mews Lodge' is one of three new build properties nestled in this private location in the heart of Pinner. The accommodation comprises of two sizeable bedrooms, two bathrooms, a spacious kitchen and a separate living space. The property is fitted with a Mobalpa Kitchen with Miele/ Bosch appliances and benefits its own allocated parking space, underfloor heating throughout the ground floor and a luxury fitted bathroom with porcelain wall and floor tiles.